



Optio

BSC94 Lift & Slide Door

aluk.co.uk

Experts in Aluminium

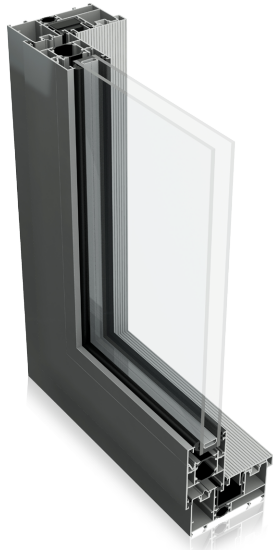
ALUK[®]

Optio

BSC94 Lift & Slide Door



For those looking for effortless operation, look no further than our premium lift and slide door. Its vital statistics are impossible to ignore. Thermal U-Values of 1.5W/m²K (triple glazed). Panel weights of up to 400Kg. Sightlines as little as 45mm. The list goes on. As do the benefits, including multiple configurations and a wide choice of colour finishes.



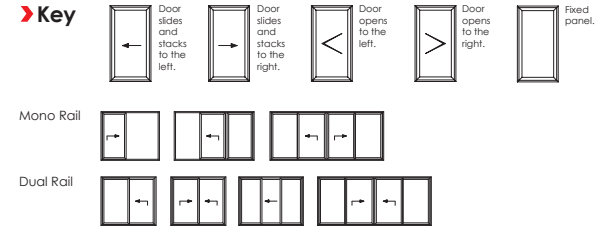
DESIGN FEATURES

- Accepts 20mm – 31mm double glazing
- Max 400kg panel weight (double bogey)

OPTIONS

- Available as Inline Sliding
- Slimmer sightline of 45mm available
- Multiple sliding configurations
- Mono or Dual rail options
- Available in single and dual colour
Anodised finishes also available
- Range of hardware and security features

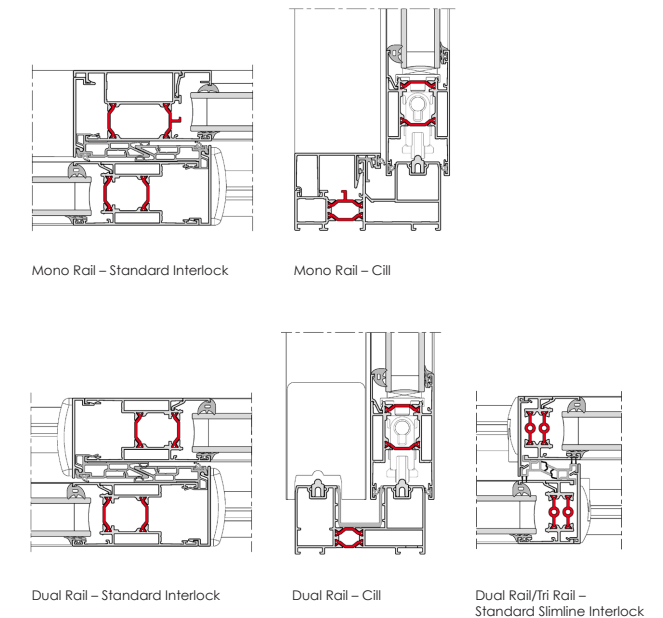
BSC94 (LIFT & SLIDE) CONFIGURATIONS



SPECIFICATIONS

	BSC94	BSC94SLIM
Performance and accreditation		
U-value (double glazing)* (U _g = 1.0W/m ² K) (mono rail)	1.6 W/m ² K	x
U-value (triple glazing)* (U _g = 0.7W/m ² K) (mono rail)	1.4 W/m ² K	x
U-value (double glazing)* (U _g = 1.0W/m ² K) (dual rail)	1.7 W/m ² K	1.7 W/m ² K
U-value (triple glazing)* (U _g = 0.7W/m ² K) (dual rail)	1.5 W/m ² K	1.5 W/m ² K
Green guide rating	C rated	C rated
Acoustic performance (dB)	npd	npd
Air tightness (Pa)**	Class 4 (600 Pa)	Class 4 (600 Pa)
Water tightness (Pa)**	Class 7A (300 Pa)	Class 7A (300 Pa)
Wind load (Pa)**	C4 (1600 Pa)	C4 (1600 Pa)
Configuration & frame		
Opening	Lift & slide	Lift & slide
Mono rail (105mm)	✓	x
Dual rail (94mm)	✓	✓
Size limits		
Max vent weight***	400kg	400kg
Max frame height****	3000mm	3000mm
System features		
Dual colour option	✓	✓
Multi-point locking	✓	✓
Glazing options	Internal	Internal
Glazing thickness	20mm – 31mm	20mm – 31mm
Sightlines	100mm	45mm

CAD CROSS SECTIONS



AluK (GB) Limited
Newhouse Farm Ind Est
Chepstow
NP16 6UD
+44 (0)1291 639 739

AluK Design Studio
5-11 Worship Street
London EC2A 2BH

aluk.co.uk

*U-values based on CEN size door (2000mm x 2180mm).

**All weather test data taken from BS EN 6375-1 based upon highest performing door configuration.

***Based on using a Tandem bogie kit.

****Dependent on wind load and lock variation.

Note: npd = No performance declared

Please visit www.aluk.co.uk to download all BIM components and CAD files.